

Community Pharmacy Kent



Annual Report 2022-23

Incorporating the Annual Accounts 2022/23



TABLE OF CONTENTS

• Officers	Page: 2
• Chair's report	Page: 3-4
• Chief Executive Report	Page: 5-17
• Treasurer Report	Page: 18
• Financial Report	Page: 19-26
• Members of the Committee 2022/23	Page: 27



Officers

Chair: Amish Patel

Vice Chair: David Entwistle

Treasurer: Olabimpe Kunlipe

Chief Executive Officer: Mark Anyaegbuna
Email: mark.anyaegbuna@kentlpc.org.uk

Sub-committee members 2022/23

- Governance committee: Olusola Ifekoya, Olabimpe Kunlipe and Sunil Chopra.
- Finance committee: Mukesh Sahota, Maureen Aruede and Caroline Cleary.
- Communications committee: David Entwistle, Sachin Mehta and Maureen Aruede.

Chair's Report



Dear Colleagues,

2022/23 marks the end of COVID restrictions and a return to normality. I want to start my report by thanking the committee for staying on for an additional year to fully implement the recommendations of Review Steering Group (RSG). I am proud of the work the LPC office team has done in ensuring we worked through our Transforming Pharmacy Representation (TAPR) programme timeline meticulously. Kent LPC was one of the first LPCs in the country to complete the programme which was brilliant.

The previous financial year was very challenging for Community Pharmacy and the country at large. The impact of funding cuts affecting Community Pharmacy have continued to hurt the sector. As a contractor in Kent, running a second-generation pharmacy which has been established since 1985, we are at a point where the financial impact on us is completely unsustainable.

There have also been an unprecedented number of drug shortages, soaring drug costs, soaring business costs, and workforce crisis, not limited to pharmacy, which has led to many pharmacies having to temporarily close for part or whole days. And just when negotiations with the DHSC and NHSE were due to conclude, we have the changes within parliament causing delay.

Unless the government can do something drastic to increase funding, we will continue to see more pharmacies close. These closures will mean that people will struggle to access their medicine and pharmaceutical care, increasing pressure on general practice and hospitals.

Pharmacies remain a key part of the community, we do love to be part of the community, speaking to patients every day, helping patients every day.

We have seen significant workforce challenges in our sector. Huge waves of people are leaving the profession altogether, people not being attracted to the job in the first place, who are looking for a better work-life balance. Workforce is hence one of our strategic pillars and high priority for the LPC.

As stated earlier, we fully completed all the recommendations of RSG at the end of March 2023 and a new committee started on the 1st of April, making us one of the first LPCs in the country to complete this. A lot of work has gone into making this happen so... thank you to all involved.

On the 1st of July 2022, CCGs morphed to ICBs which meant lots of changes in the NHS commissioning structure. A special thank you to Mark Anyaegbuna, CEO Kent LPC, for ensuring we are integrated in the new structure through building relationships for adequate representation. We had Paul Bentley, ICB CEO and several senior leaders within the ICB attend our LPC meeting which was great to see.

I am also encouraged by the relationship the LPC has built with key stakeholders including NHSE&I, the LMC and other Primary care contractors. This will also help advance the priorities of our sector.

The Community Pharmacy conference, in February 2023, was a huge success. We had lots of brilliant speakers at the event including Cedi Frederick, Chair ICB and Janet Morrison, CEO Community Pharmacy England. Thanks all that made time to attend the event.

Other notable achievements include the continuation of the GPCPCS project funding till 2025, DMS project lead funding, PCN Leads funding, including backfill for training and development, piloted two Urgent Treatment Centre (UTC) CPCS sites at Gravesham and Maidstone including the purchase of PharmAlarms in all Community Pharmacy pilot sites. Furthermore, the LPC office has run several webinars on the Hypertension case finding service, DMS, PQS and GPCPCS, to support contractors with the provision of NHS services.

I would like to encourage contractors to attend the open part of LPC meetings which will give you an insight of the work we do for the sector. Please do continue to send in issues and local intelligence to the office so that as a committee we can effectively support you.

To that end, thank you to all contractors and your teams. Your continued resilience and dedication to your communities and patients does not go unnoticed and helps us to demonstrate what an integral role community pharmacy has within primary care.

A handwritten signature in black ink, appearing to read "Amish Patel".

Amish Patel
Chairman – Kent LPC

Chief Executive Officer's Report



Dear Colleagues,

Welcome to the 2022–23 annual report. I am delighted to be writing my first full year report as CEO of Community Pharmacy Kent (CPK). For those not aware, I was appointed CEO on the 14th of March 2022 following on from my previous role as Chair of the LPC. It has been my pleasure to continue to represent Community Pharmacies (CPs) across Kent and Medway.

The previous financial year was challenging and turbulent for Community Pharmacy. We had to grapple with funding cuts, medicine supply issues/shortages, price concessions, the cost of living crisis, inflation, political uncertainty, pharmacy closures, the Streptococcus A (Strep A) outbreak, strikes, increased workload and workforce challenges. There is an urgent need to address the funding gap and the recent recruitment drive of pharmacists/staff into general practice, as part of Additional Roles Reimbursement Scheme (ARRS) role, have further depleted the community pharmacy workforce.

At the LPC, I have continued to focus on what is within our control and strategically start to tackle some of these issues to alleviate the burden on our pharmacy contractors.

In my first 100 days as CEO, I worked methodically to give the LPC stability and maintain good governance in how we represent our contractors. This resulted to the review and formation of three sub-committees as below:

- Governance sub-committee: members include Olabimpe Kunlipe, Olusola Ifekoya and Sunil Chopra.
- Finance sub-committee: members include James Greives, Maureen Aruede and Caroline Cleary.
- Performance sub-committee: members include Amish Patel (Chair), David Entwistle and Sachin Mehta.

There were Terms of Reference accompanying each of the sub-committees.

We set out our LPC strategy and vision which was signed off by the full committee on the 17th of May 2022.

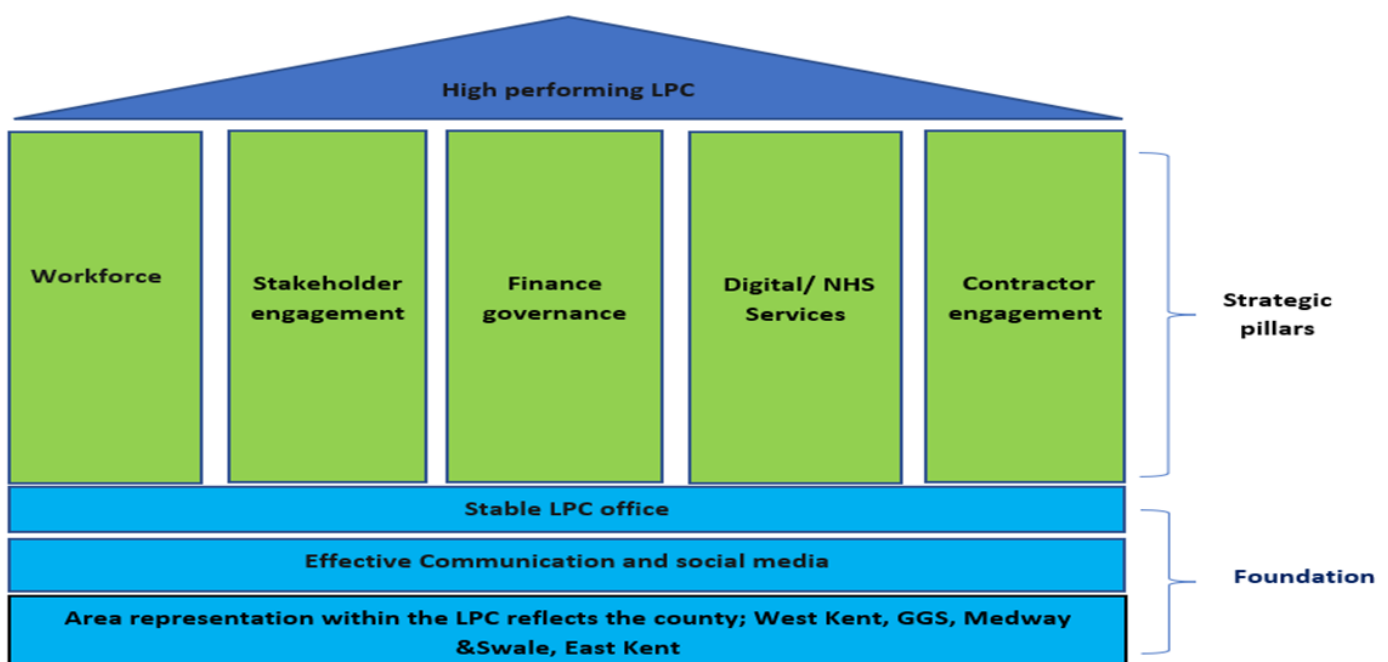


Vision

To maximise pharmacy contribution to health and wellbeing of people living in Kent and Medway by effectively engaging, supporting, and representing community pharmacy, promoting best practice, and developing service opportunity for the benefit of all contractors.

Strategy

In our strategy, there are three foundations that underpin our five strategic pillars which are key enablers in us becoming a high performing LPC.

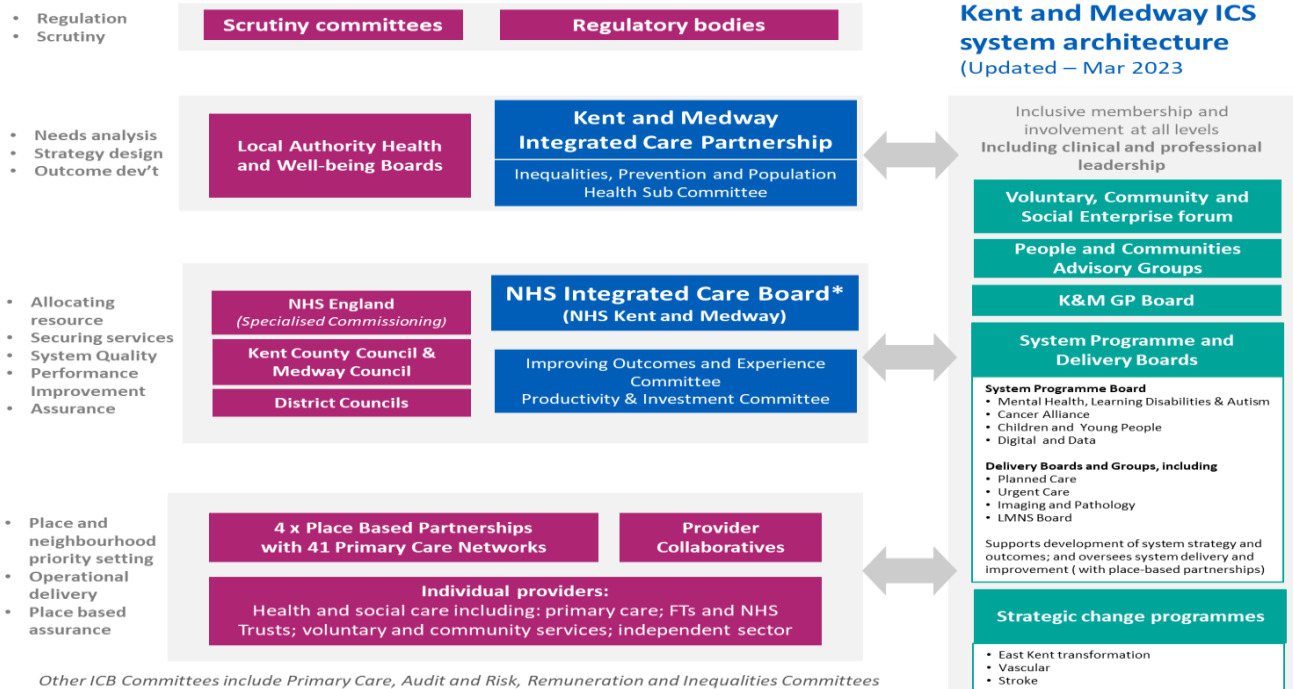


As we continued to work through the strategy, we had a significant change in the NHS commissioning structure with Clinical Commissioning Groups (CCGs) moving to Integrated Care Boards (ICBs) on the 1st of July 2022. The delegation of the community pharmacy contract from NHSE to ICBs meant there was an urgent need to build relationships with the new key stakeholder and ensure robust representation of our sector at each strategic/governance level.

As the ICB organisational structure started to develop, the LPC office worked swiftly to engage with the newly appointed executive team to advance the crucial role of community pharmacy in the management of health and wellbeing of people in our communities.

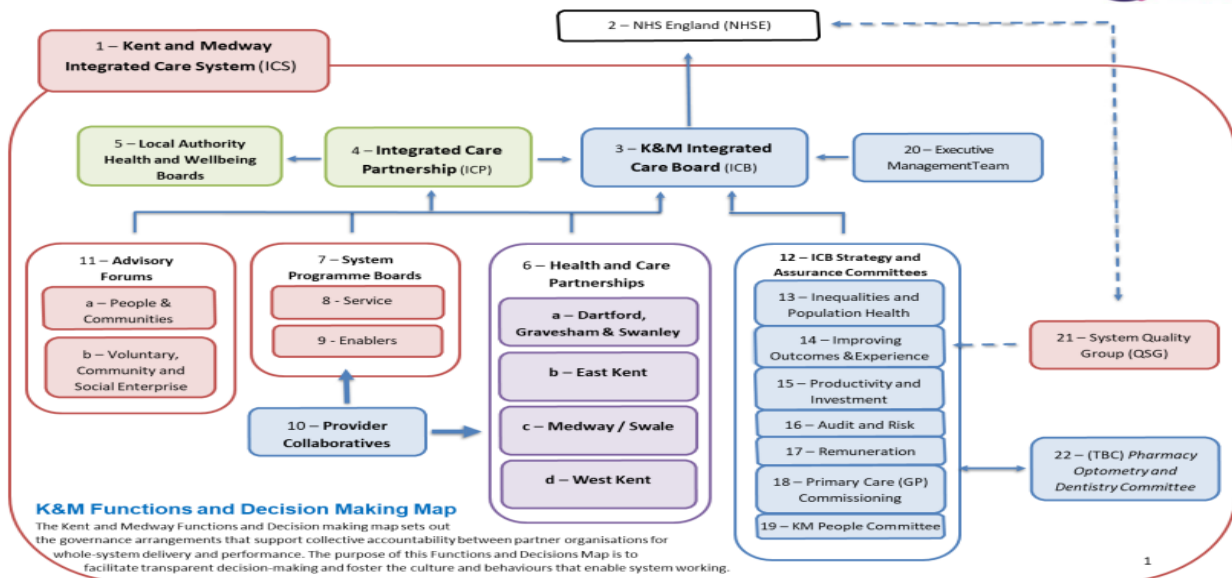
Stakeholder engagement is one of our key strategic pillars. Although community pharmacy is not on the ICB board, due to NHSEI guidance, we worked hard to ensure that we are part of key committees within their governance structure. Community pharmacies are fundamental in addressing disease prevention and health inequalities on the agenda of the ICB. Therefore, engagement with the sector is crucial as indicated in the Fuller report of which all ICB CEOs signed up to. To assess the Fuller report, follow this link - [NHS England » Next steps for integrating primary care: Fuller stocktake report.](#)

NHS Kent and Medway ICS Architecture – High Level Overview



Kent and Medway ICS Functions and Decisions Map

ICS Governance Framework



Follow this link to view the ICS governance handbook: [Governance_handbook.docx \(live.com\)](https://www.kent.nhs.uk/ICS/governance/governance_handbook.docx)



We have a lot to be proud of in 2022-23. Here are some of the key highlights.

1. PCN leads development day.



Dhanuja Varghese PCN lead AMP and Pharmacy Manager Well Pharmacy Ashford



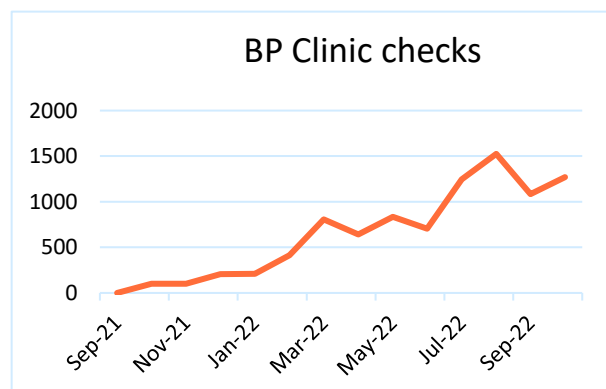
Alex Muntean PCN lead Sheppey and Pharmacy Manager Minister Pharmacy

In May 2022, we launched a PCN Lead funded project by NHSE to support the rollout of the hypertension case finding service. PCN leads received £400.00 to produce a proposal on the rollout of the service and a further £800.00 on completion of stipulated PCN activity and outcomes.

We held a face-to-face training and development for all PCN leads in June 2022 with locum backfill paid. The training included a sharing best practice session to enable PCN leads to achieve the project objectives and celebrate success. The feedback was overwhelmingly positive. We had a significant increase in the uptake of the hypertension case finding service across our pharmacies.

We also ran a hypertension case finding webinar in July 2022 to further drive the uptake of the service.

Month	BP Clinic checks	ABPM
Apr-22	642	35
May-22	836	42
Jun-22	706	26
Jul-22	1,246	21
Aug-22	1,525	51
Sep-22	1,083	20
Oct-22	1,270	45
2022/23 Total	7,308	240
Total since launch	9,144	314



Data above shows the number of BP checks in CP in Apr – Oct 2022.

2. Kent and Medway Integrated Pharmacy Medicines Optimisation (IPMO) conference

We secured funding for Community Pharmacy representation at the first ever IPMO conference. There was a great selection of speakers across the pharmacy senior leadership team in Kent and Medway. I was delighted to hear community pharmacy colleagues engage in conversation during the conference. A special thank you to those that made time to attend that conference.

A copy of the conference flyer is as below



Kent & Medway Integrated Pharmacy Medicines Optimisation & Workforce Development Conference
28th April 2022

Kent and Medway Integrated Care System

CONFIRMED SPEAKERS

<p>David Webb Chief Pharmaceutical Officer, NHS England</p> <p>Mildred Johnson Clinical Director of Pharmacy & Medicines Optimisation Chair - Kent Surrey & Sussex Chief Pharmacists & Medicines Management Leads Network Maidstone & Tunbridge Wells NHS Trust</p> <p>Jagdip Bahia Chief Pharmacist, Kent and Medway NHS and Social Care Partnership Trust</p> <p>Heather Lucas Deputy Director of Medicines Optimisation, NHS Kent and Medway CCG</p>	<p>Cedi Frederick Chairman, Kent and Medway ICS</p> <p>Priscilla Kankam Deputy Director of Nursing, Quality and Medicines Optimisation SRO - Covid & Flu Vaccination Programme NHS Kent and Medway CCG</p> <p>Stephen Cook Chief Pharmacist, Medway NHS Foundation Trust</p> <p>Jessica Clements Lead Pharmacist for Speciality Medicines, Medway NHS Foundation Trust</p> <p>Ann Slee Associate CCIO (Medicines), NHS England</p> <p>Dr Tarlochan Gill Chair, Kent & Medway Pharmacy LPN</p>	<p>Mark Anyaegbuna Chief Executive Officer, Kent LPC</p> <p>Dr Ruth Brown Chief Pharmacist, Kent Community Health NHS Foundation Trust</p> <p>Maria Staines Early Careers Pharmacist Training Programme Director, Kent ICS</p> <p>Simon Wan Chief Pharmacist & Director of Pharmaceutical Services, Dartford & Gravesham NHS Trust</p> <p>Lucy Galloway Pharmacy Lead, NHS South East Genomic Medicine Service Alliance</p>
---	---	--

CONTACT US FOR MORE INFORMATION
emilee.johnson@pmconsultancy.uk
@pharman Pharmacy Management

CLICK HERE TO BOOK YOUR FREE PLACE NOW

3. Transforming Pharmacy Representation (TAPR)



The Review Steering Group (RSG) published proposals for the future of PSNC and LPCs in April 2022. All contractors in England were asked in a single vote to approve (or not) the proposals. On the 22nd of June 2022, the RSG announced the results: 88.6% were in favour of the changes.

As a result of the vote, LPCs across the country were required to complete a programme of work in response to the mandate given.

At our LPC, we set up a TAPR committee and agreed timelines on how we would achieve all elements of the TAPR programme.

Key changes from the review include the following:

- LPC name: Rebrand all LPCs to Community Pharmacy Local (CPL).
- LPCs to align with NHS Integrated Care Systems (ICS).
- LPC committee sizes to range between 10-12 members whilst maintaining local proportional representation.
- Increase the contributions that LPCs make to PSNC, on a trajectory of an additional £1.5m pa beginning April 2024 without increasing contractor levies.
- LPCs to adopt a new model constitution.

A special contractor meeting took place on the 24th of January with contractors voting overwhelmingly to adopt the model constitution.

We are one of the first LPCs in the country to complete the TAPR programme, in line with Community Pharmacy England and our timeline, with a new committee that started on the 1st of April 2023.

4. Discharge Medicine service (DMS)

We know that DMS referrals from acute trust into community pharmacy is not where we need it to be. This is why we started a working group with representatives from our four acute trusts across our county to look at how we can unlock the barriers to the service and increase the number of referrals.

Table shows the total number of discharged patients vs DMS referrals.

Organisation Name	YTD total DMS	YTD total discharges	YTD average referral rate (%)
MEDWAY NHS FOUNDATION TRUST	753	51669	1.46%
DARTFORD AND GRAVESHAM NHS TRUST	182	52645	0.35%
MAIDSTONE AND TUNBRIDGE WELLS NHS TRUST	275	86046	0.32%
EAST KENT HOSPITALS UNIVERSITY NHS FOUNDATION TRUST	21	87610	0.02%

We also organised a webinar of all community pharmacy contractors and Hospital Pharmacy teams which was an ideal forum to share best practice. The webinar was a resounding success.

Whilst we continue to look at how we increase DMS referrals into community pharmacy, may I encourage contractors to ensure we claim all completed DMS via Manage Your Service (MYS).

5. GPCPCS

The LPC has actively supported the rollout of GPCPCS. In December 2023, we appointed Adeyinka Jolaoso as the GPCPCS project lead for the LPC. His appointment meant that we could continue to provide one to one support and training for general practice and community pharmacy.

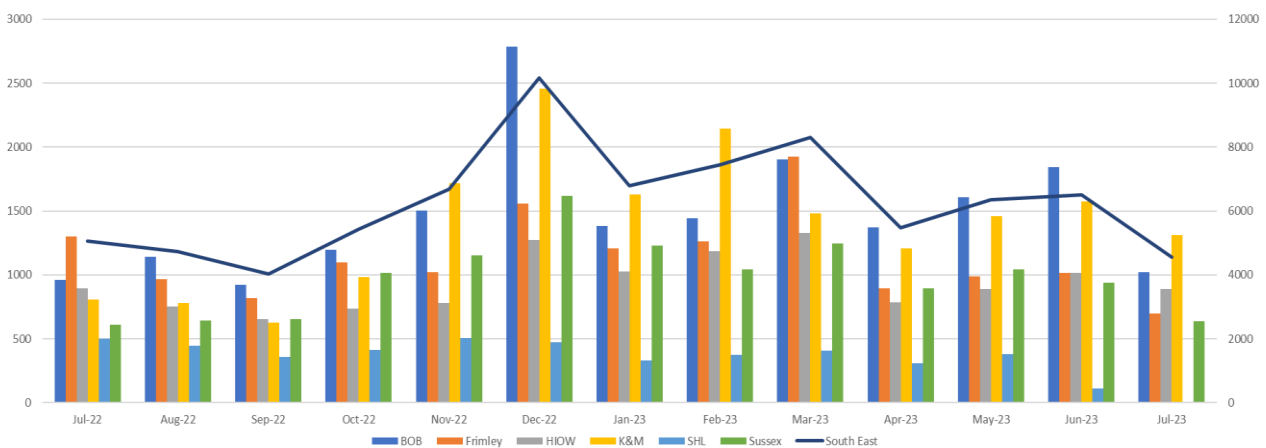
Kent has continued to be in the top two in GPCPCS service provision across the Southeast. This is testament to great collaboration between pharmacies and our GP colleagues in making this service a success.

Community Pharmacies across Kent and Medway completed 23,991 GPCPCS out of 105,202 referrals since the commencement of the service in November 2021. We have saved 3998 hours of GP time which is £174,255 in GP cost savings. This is a phenomenal achievement.

Calculation was based on:

- 10-minute GP Appt
- 2022 GP Cost Saving based on £43.58 an hour. Calculated the median salary to be £85,000 and based on 1950 hours per year, this calculates as £43.03 per hour. <https://www.healthjobs.co.uk/blog/the-gp-salary--and--pay-guide/#average>

Southeast GP CPCS Referral



Yellow bar on the chart is Kent and Medway

6. Streptococcus A (Strep A)

There was significant demand across the healthcare system last winter due to an outbreak of strep A infection. See the link for notification from UKHSA [UKHSA update on scarlet fever and invasive Group A strep - GOV.UK \(www.gov.uk\)](https://www.gov.uk/government/news/ukhsa-update-on-scarlet-fever-and-invasive-group-a-strep).

Patients turned to their community pharmacies as the most accessible healthcare professional in their communities for support. There was a lot of misinformation that circulated on social media urging people across Kent and Medway to go to their pharmacy for support. This resulted in significant traffic in our pharmacies increasing pressure on colleagues. We also had a significant shortage of antibiotics which meant that a Serious Shortage Protocol (SSP) was introduced by Department of Health and Social Care (DHSC).

At the LPC we focused on key elements to support contractors.

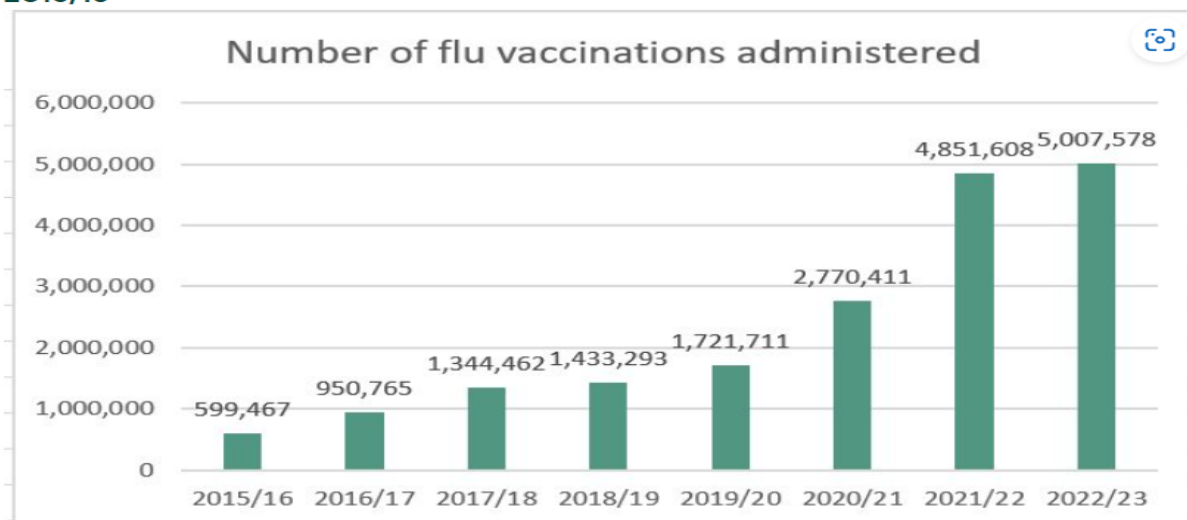
- We worked in collaboration with the ICB and acute trust Chief Pharmacists to create Community Pharmacy hubs that will hold certain antibiotics to alleviate the burden on A&Es. We were the pioneers of this model which was replicated in other areas.
- We strategically addressed the misinformation on social media platforms which was causing undue pressure in our pharmacies.
- We supported our contractors with SSP questions and prescription endorsement guidance.
- We communicated pressures in community pharmacy with other healthcare providers and supported with queries around antibiotics availability.

In December alone, we received nearly 10,000 GPCPCS referrals which was a clear indication of the level of demand on our pharmacies. Thank you for your resilience at this time in ensuring patients have access to their medicine and pharmaceutical needs were met.

7. Flu vaccination

Over five million NHS flu vaccinations were administered by Community Pharmacy under the NHS advanced service which was an increase of 3.1% in 2022/23 compared to 2021/22. The actual number of vaccinations in community pharmacy was higher as some contractors were not using an electronic system to record vaccines administered. We delivered 151,623 flu vaccinations across pharmacies in Kent.

Number of flu vaccinations administered by pharmacies since the service launched in 2015/16



This is a phenomenal service that have helped protect the most vulnerable and prevented flu outbreak within our communities, reducing hospitalisation and burden on the NHS. The sector has continued to see hard-to-reach patient groups which was key in driving down health inequality and improving patient outcome.

Note: The LPC organised a flu vaccination training which was cancelled a week before due to low uptake.

8. Fire at Pender Pharmacy



On Thursday the 26th of May 2022, there was a devastating fire at Pender Pharmacy Gravesend. The LPC worked closely to support Mr Stephen Kane, owner of the Pharmacy, by engaging in the activities below:

- Visited the site and conducted a walk around with Steve to look at possible relocation.
- Attended during a visit by Gravesend MP, Mr Adam Holloway to inspect the area for support.
- The LPC produced posters that were placed around the barricade to signpost patients to nearby pharmacies.
- Provided Steve with contact of CD accountable officer and NHSE to support him with contractual steps to take due to the closure of the pharmacy.

Stephen received an LPC start award for his resilience in the face of the unprecedented event at the LPC Community Pharmacy Conference. He never complained about what happened, he was simply more concerned about letting his staff and patients down. He was, and is, an inspiration to us all at the LPC office. Follow the link below to read more about the fire at Pender Pharmacy. [Pender Pharmacy opens at new location after fire in Queen Street, Gravesend \(kentonline.co.uk\)](https://www.kentonline.co.uk/news/2022/05/26/pender-pharmacy-opens-at-new-location-after-fire-in-queen-street-gravesend/).

9. Urgent Treatment Centre (UTC) CPCS pilot

Gravesham and Queen Elizabeth Queen Mary (QEQM) UTC were chosen as pilot sites for the CPCS pilot. The UTC pilot site would be able to send CPCS referrals to participating pilot pharmacies.

The LPC provided training and support for staff at the UTC sites. We supported pharmacies chosen to participate in the pilot to sign the Service Level Agreement on MYS. PharmAlarms were also purchased and the LPC confirmed installation at all pilot pharmacy sites.

QEQM was unable to fully start the pilot due to an internal operational issue however the pilot at Gravesham was a resounding success.

10. Locally Commissioned Services

The LPC worked with commissioners on all the locally commissioned services below. If you need more information on any of these services, please email the LPC office at admin@kentlpc.org.uk.

- Local enhanced service for Urgent Care Medicines Supply for community pharmacy.
- Local Enhanced service for palliative care medicines supply from community pharmacy.
- West Kent minor ailment service.
- Supply of Antiviral provision Community Pharmacy Service.
- Health check service specs. Kent and Medway.
- Service Level Agreement Medication-Assisted Treatment (MAT) Core Service.
- Needle exchange.
- Emergency Hormonal Contraception.
- Chlamydia treatment.



11. Community Pharmacy Conference



*Stephen Kane owner Pender Pharmacy
Receiving LPC Star Award*



*Pam Karson owner Karsons Pharmacy
Receiving Kent PCN Lead of the Year Award*



*Adesola Adeniye owner Daysol Pharmacy
Receiving Pharmacist of the Year Award*



*Baxter Pharmacy
Awarded Pharmacy Team of the Year*

Over 70 contractors attended our first ever face-to-face Community Pharmacy Conference held on Sunday the 12th of February 2023 at Mecure Hotel Maidstone.


We had updates from the LPC, Community Pharmacy England (CPE), ICB, HEE and KCHFT. There was a wide range of event sponsors on the day. The highlight of the day was the celebration of success of colleagues who have gone above and beyond. The conference feedback and comments below were outstanding.

Thank you to all that attended the conference.

The LPC produced the attached thank you video which was played at the conference.

[\(1\) Kent LPC - YouTube.](#)

Conference feedback analysis



Evaluation Feedback Forms

Everyone who attended the Kent LPC Conference was asked to fill out an evaluation form covering each aspect of the day.

The Results have been compiled below:

	Poor	Fair	Good	Very Good	Excellent
Venue			5%	15%	80%
LPC Update				15%	85%
ICB Update			5%	15%	80%
PSNC Update				60%	40%
Sexual Health & Contraception Service Update			30%	10%	60%
HEE update				20%	80%
Celebrating Success Awards					100%

Further feedback on the comment section of the questionnaire.

- Thank you!
- It was great to network & meet new People.
- More events like this would be great!
- Lunch was great & gave me a chance to network.
- Great conference.
- Everything was perfect.
- The little details were an added bonus.
- It was great to be able to see the faces of people from all aspects of pharmacy.
- Best selection of speakers at any conference.
- Please add more days like today.

Thank you to all that attended the conference.

In closing, despite the acknowledgement of the great work done by community pharmacy in getting the nation back on its feet in the face of the worse pandemic in a generation and with the most recent strep A outbreak, the sector remains severely underfunded.

The recent funding for community pharmacy to help improve primary care access is a good recognition of the skill set of pharmacy staff, but this does not go far enough to address the funding shortfall. We have started to see some pharmacies disappear from our communities.

I am encouraged by the agility, resilience and entrepreneurial spirit in community pharmacy which makes the sector a shining beacon in our communities in addressing our healthcare needs. Community pharmacy teams are our unsung heroes. The nation owes you a debt of gratitude.

Thank you for all you do to support the health and wellbeing of people that live in our communities.

A handwritten signature in black ink, appearing to read "Mark Anyaegbuna".

Mark Anyaegbuna
Chief Executive Officer



Treasurer report

The Income and Expenditure accounts of Kent LPC for the year ending the 31st of March 2023 are as attached.

Main project income increased in 2022/23 by £38,700 as the LPC received funding to support the Urgent Treatment Centre (UTC) CPCS pilot, Hypertension Case finding service project and PCN leads training and development. GPCPCS funding has been extended till March 2025.

Community Pharmacy England (CPE) levy increase of 70% meant that our proposed budget for 2022/23 is £359,152. CPE levy increase is as below.

- 2021/22 levy £99,358pa.
- 2023/24 Levy £142,346pa
- 2024/25 Levy £169,002pa

We expect no increase to the monthly contractor levy which will be maintained at £23,826. Any excess spend will be funded from the surplus and efficiency savings.

The prepared accounts have been examined by Bayer Hughes & Co, chartered accountants and are attached at the end of the report.

I invite any questions that you may have relating to the accounts.

A handwritten signature in black ink, appearing to be 'Olabimpe'.

Olabimpe Kunlipo
Treasurer Kent LPC



KENT LOCAL PHARMACEUTICAL COMMITTEE ACCOUNTS FOR THE YEAR ENDING 2023

KENT LOCAL PHARMACEUTICAL COMMITTEE

FINANCIAL STATEMENTS

FOR THE YEAR ENDED 31 MARCH 2023

KENT LOCAL PHARMACEUTICAL COMMITTEE

REPORT OF THE COMMITTEE MEMBERS FOR THE YEAR ENDED 31 MARCH 2023

PRINCIPAL ACTIVITY

Kent is a Local Pharmaceutical Committee ("LPC") acting in the role of a local NHS representative organisations.

Our Goal is: To Maximise Community Pharmacy contribution to health and wellbeing of people living in Kent and Medway by effectively engaging, supporting and representing community pharmacists, promoting best practice, and developing service opportunity for the benefit of all contractors.

THE COMMITTEE

Kent LPC is an association whose functions and procedures are set out in our Constitution [and Rules].

During the year ended 31 March 2023 Kent LPC had 9 members on its main committee as follows:

3 members from CCA

3 members from AIMp

3 members from Independent

Full details of the members can be found on Kent LPC website [Committee members – Community Pharmacy Kent \(Kent LPC\)](#)

All members have continued to adhere to corporate governance principles adopted by the Committee and the Code of conduct.

OVERVIEW

For full details of the Kent LPC's activities, please refer to the Chairman's and Chief Executive Officer's report in the full Annual Report.

This report was approved by the Kent LPC on 1 August 2023 and signed on its behalf by:



.....

Amish Patel – Chair of the Committee

KENT LOCAL PHARMACEUTICAL COMMITTEE

STATEMENT OF COMMITTEE MEMBERS' RESPONSIBILITIES FOR THE YEAR ENDED 31 MARCH 2023

The committee members are responsible for preparing the Report of the Committee Members and the financial statements in accordance with applicable law and regulations.

The committee members are required to prepare financial statements for each financial year. The committee members have elected to prepare the financial statements in accordance with United Kingdom Generally Accepted Accounting Practice (United Kingdom Accounting Standards and applicable law), including Financial Reporting Standard 102 'The Financial Reporting Standard applicable in the UK and Republic of Ireland'. The committee members must not approve the financial statements unless they are satisfied that they give a true and fair view of the state of affairs of the company and of the surplus or deficit of the committee for that period.

In preparing these financial statements, the committee members are required to:

- a) select suitable accounting policies and then apply them consistently;
- b) make judgments and accounting estimates that are reasonable and prudent;
- c) prepare the financial statements on the going concern basis, unless it is inappropriate to presume that the committee will continue in operation.

The committee members are responsible for keeping adequate accounting records that are sufficient to show and explain the committee's transactions and disclose with reasonable accuracy at any time the financial position of the committee. They are also responsible for safeguarding the assets of the committee and hence for taking reasonable steps for the prevention and detection of fraud and other irregularities.

The committee members are responsible for the maintenance and integrity of the financial information included on the committee website. Legislation in the United Kingdom governing the preparation and dissemination of financial statements may differ from legislation in other jurisdictions.

The committee members confirm that so far as they are aware, there is no relevant audit information of which the committee's auditors are unaware. They have taken all the steps that they ought to have taken as committee members in order to make themselves aware of any relevant audit information and to establish that the committee's auditors are aware of that information.

KENT LOCAL PHARMACEUTICAL COMMITTEE

**INCOME AND EXPENDITURE ACCOUNT
FOR THE YEAR ENDED 31 MARCH 2023**

	2023		2022	
	£	£	£	£
Income				
Prescription Pricing Division				
Statutory Levy	285,922		238,268	
Project Income	4,885		9,990	
Project Income - 2	38,700		187,305	
Sponsorship	-		3,520	
Bank Compensation	130		-	
		329,637		439,083
Expenditure				
Staff Wages	130,563		74,416	
Employers NIC	9,934		4,730	
Employers Pension Contribution	2,545		1,504	
Project Expenses - 2	9,070		31,720	
Chairman's Honorarium	1,000		7,813	
Consultancy Fees	23,890		1,403	
Meeting Room Hire	627		-	
Other Meeting Expenses	-		9	
Members Expenses	11,642		18,397	
Members Travel	67		94	
Treasurer Expenses	1,536		-	
Staff Travel	1,051		1,362	
Contractors Meetings	1,645		-	
Office Expenses	1,526		562	
Telephone & Broadband	90		1,202	
Information Technology	1,005		5,640	
Accountancy	1,140		1,332	
Bank Charges	168		145	
Public Relations & Campaigns	11,307		12,140	
PSNC Levy - 30 Sep 2022	49,679		49,679	
PSNC Levy - 31 Mar 2023	49,679		52,496	
Miscellaneous	-		100	
		308,164		264,744
Excess of Income/ (Deficit) Over Expenditure		21,473		174,339
Surplus Brought Forward		401,910		227,571
Surplus Carried Forward		423,383		401,910

The notes form part of these financial statements



KENT LOCAL PHARMACEUTICAL COMMITTEE

BALANCE SHEET
31 MARCH 2023

	2023 £	2022 £
CURRENT ASSETS		
Cash at bank	<u>423,383</u>	<u>401,910</u>
TOTAL ASSETS LESS CURRENT LIABILITIES and NET ASSETS ATTRIBUTABLE TO MEMBERS	<u>423,383</u>	<u>401,910</u>
REPRESENTED BY: GENERAL FUND		
BALANCE AT 01 APRIL 2022	401,910	227,571
SURPLUS FOR THE YEAR	<u>21,473</u>	<u>174,339</u>
BALANCE AT 31 MARCH 2023	<u>423,383</u>	<u>401,910</u>

These financial statements were approved by the Kent LPC 1 August 2023 and signed on its behalf by:



.....
Amish Patel - Chair of the Committee



.....
Olabimpe Kunlipo - LPC Treasurer

The notes form part of these financial statements

KENT LOCAL PHARMACEUTICAL COMMITTEE

NOTES TO THE FINANCIAL STATEMENTS FOR THE YEAR ENDED 31 MARCH 2023

Accounting Policies

With the exception of some disclosures, the financial statements have been prepared in compliance with FRS 102 Section 1A and under the historical cost convention. The financial statements are prepared in sterling, which is the functional currency and monetary amounts in these accounts are rounded to the nearest £. The financial statements present information about the committee as a single entity. The following principal accounting policies have been applied:

Income and Expenditure

Both income and expenditure are accounted for on the accruals basis. The primary source of income shown in the financial statements consists of levies from NHSBA Contractors in respect of that period.

Judgements and Key Sources of Estimation Uncertainty

The preparation of the financial statements requires management to make judgements, estimates and assumptions that effect the amount reported. These estimates and judgements are continually reviewed and are based on experience and other factors, including expectations of future events that are believed to be reasonable under the circumstances.

Financial Instruments

The committee only enters into basic financial instrument transactions that result in the recognition of financial assets and liabilities like other debtors and creditors. Financial assets and liabilities are recognised when the company becomes a party to the contractual provisions of the instruments.

Going concern

The committee members consider that there are no material uncertainties about the committee's ability to continue as a going concern. In forming their opinion, the committee members have considered a period of one year from the date of signing the financial statements.

LOCAL PHARMACEUTICAL COMMITTEE

INDEPENDENT CHARTERED CERTIFIED ACCOUNTANTS' REVIEW REPORT TO THE COMMITTEE MEMBERS FOR THE YEAR ENDED 31 MARCH 2023

We have reviewed the committee's financial statements for the year ended 31 March 2023, which comprises Income and Expenditure Account, Balance Sheet, and notes to the financial statements, including a summary of significant accounting policies. The financial reporting framework that has been applied in their preparation is applicable law and United Kingdom Accounting Standards, including Financial Reporting Standard 102 *The Financial Reporting Standard applicable in the UK and Republic of Ireland* (United Kingdom Generally Accepted Accounting Practice).

Committee Members' Responsibility for the Financial Statements

As explained more fully in the Responsibilities Statement set out on page 2, the committee members are responsible for the preparation of the financial statements and for being satisfied that they give a true and fair view.

Accountants' Responsibility

Our responsibility is to express a conclusion on the financial statements. We conducted our review in accordance with International Standard on Review Engagements (ISRE) 2400 (Revised) *Engagements to review historical financial statements*. ISRE 2400 (Revised) requires us to conclude whether anything has come to our attention that causes us to believe that the financial statements, taken as a whole, are not prepared, in all material respects, in accordance with United Kingdom Generally Accepted Accounting Practice.

Scope of the Assurance Review

A review of financial statements in accordance with ISRE 2400 (Revised) is a limited assurance engagement. We have performed additional procedures to those required under a compilation engagement. These primarily consist of making enquiries of management and others within the entity, as appropriate, applying analytical procedures and evaluating the evidence obtained. The procedures performed in a review are substantially less than those performed in an audit conducted in accordance with International Standards on Auditing (UK). Accordingly, we do not express an audit opinion on these financial statements.

Conclusion

Based on our review, nothing has come to our attention that causes us to believe that the financial statements have not been prepared:

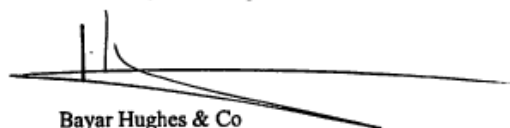
- so as to give a true and fair view of the state of the committee's affairs as at 31 March 2023, and of its surplus for the year then ended;
- in accordance with United Kingdom Generally Accepted Accounting Practice.



LOCAL PHARMACEUTICAL COMMITTEE
INDEPENDENT CHARTERED CERTIFIED ACCOUNTANTS REVIEW REPORT
TO THE COMMITTEE MEMBERS
FOR THE YEAR ENDED 31 MARCH 2023

Use of our report

This report is made solely to the Committee's members, as a body, in accordance with the terms of our engagement letter. Our review has been undertaken so that we may state to the committee's members those matters we have agreed to state to them in a reviewer's report and for no other purpose. To the fullest extent permitted by law, we do not accept or assume responsibility to anyone other than the Committee and the Committee's members as a body for our work, for this report or the conclusions we have formed.



Bayar Hughes & Co
Chartered Certified Accountants
4 Green Lane Business Park
238 Green lane
New Eltham
London
SE9 3TL

1 August 2023

Membership and Attendance

Members of the committee are required to attend the LPC meetings regularly as well as provide input to their Local Pharmacy Groups and other roles.

A breakdown of members' attendances is provided in the table below.

Committee Member	Representing	Meeting attendance
Caroline Cleary	AIMp (Paydens)	7/8
Sachin Mehta	AIMp (Paydens)	8/8
Olabimpe Kunlipo	AIMp (Day Lewis)	7/7
James Greives	CCA (Boots)	6/7
David Entwistle	CCA (Tesco)	8/8
Olusola Ifekoya	CCA (Well)	8/8
Maureen Aruede	Independent	6/8
Sunil Chopra	Independent	7/8
Amish Patel	Independent	8/8