



## Newsletter

8th September 2023

Week 36

This newsletter contains useful information for community pharmacy owners in Kent

### Community Pharmacy Kent WhatsApp group

#### (Reminder!)

The purpose of the WhatsApp group is to cascade urgent information or deadlines to Pharmacy Contractors across Kent. This is **send only** messaging from the LPC with no chat functionality.

Messages to the group will be between the hours of 9am -5.30pm Monday – Friday.

To sign up to the WhatsApp group, please send your phone number to [admin@kentlpc.org.uk](mailto:admin@kentlpc.org.uk).

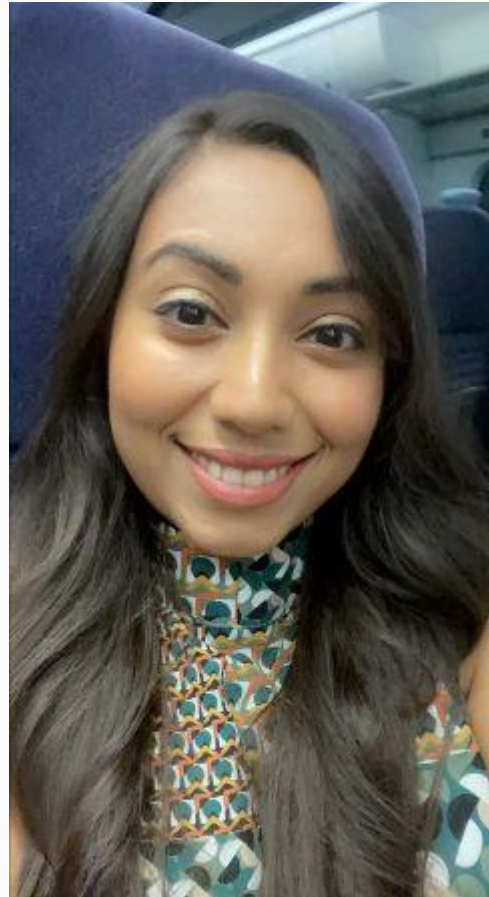


### **Introducing our new GPCPCS and Discharge Medicine Service (DMS) lead (news)**

I am delighted to announce that Priya Matta will be joining the LPC as GPCPCS and Discharge Medicine Service (DMS) lead. Priya graduated from UCL in 2017 and have been practising within the community sector.

She started her career in pharmacy as a counter assistant, and progressed up to being a pharmacy manager, so has a wealth of experience of community pharmacy operation.

Please join me in welcoming her to the role and in wishing her success.



---

### **Community Pharmacy Contractor and PCN Webinar 19.09.23 (new)**

The LPC and ICB are holding Community Pharmacy PCN leads and Contractor virtual webinar on Tuesday 19<sup>th</sup> September 7.30pm-9pm.

Webinar agenda is attached [here](#).

*Learning outcome of the Webinar...*

- Update PCN leads on form B completion as part of hypertension case finding project.
- Flu and COVID vaccination service update
- Community Pharmacy Independent prescriber and Designated Pharmacy Practitioner support.
- ICB Primary care strategy update

*Webinar details:*

- To register click [here](#) to give us an idea of attendees.

- To join the webinar click here: [Click here to join the meeting](#)

Meeting ID: 312 326 146 099

Passcode: MkdKGG

For more information on PCN leads please contact [karen.luxford@nhs.net](mailto:karen.luxford@nhs.net).

---



### **Community Pharmacy Kent Annual General Meeting (AGM) (Reminder!)**

Our AGM will take place virtually on Wednesday 27<sup>th</sup> of September 2023 7.30pm-8.30pm.

The AGM report, agenda and voter card have already been emailed to you.

Completed vote card can be emailed back to [admin@kentlpc.org.uk](mailto:admin@kentlpc.org.uk) by 12noon on 25<sup>th</sup> September 2023.

You can register to attend the AGM using this [link](#).

A teams link to join the meeting will be sent to you once registered.

---



### **ICB Primary Care strategy Survey (Reminder!)**

Dear Pharmacy Professionals,

NHS Kent and Medway became commissioners of Primary Care Community Pharmacy Services on the 1st of July 2022. Together with the Kent Local Pharmaceutical Committee, we would like to hear from the community pharmacy profession working in Kent and Medway.

Please find a link to short questionnaire [here](#) which will take about 10 minutes to complete. The closing date for responses will be the 10th of September 2023.

The responses are anonymous and will help inform the development of a Kent and Medway Primary Care

Transformation Strategy and our community pharmacy priorities going forward.

Many thanks,

Dr Ash Peshen, Deputy Chief Medical Officer for Primary Care, Kent and Medway ICB.

---



### **Pharmacy Quality Scheme (PQS) (reminder)**

[Aspiration Payment claim Window is now open](#)

The aspiration payment must be claimed between 09.00 on 4th September 2023 and 23.59 on 29th September 2023 via [NHSBSA's MYS application](#).

*Domain 1 support:* Medicine Safety and Optimization. Palliative and End of Life Care. Click [here](#) for all list the 16 palliative care medicines and pharmacies that stock them. If you need support with your PQS claim email [adenyinka@jolaoso@kentlpc.org.uk](mailto:adenyinka@jolaoso@kentlpc.org.uk).

---

### **Independent Prescriber (IP) Pathfinder Expressions of Interest (EOI) (new)**

Good news that Kent & Medway have been given funding for TWO Community Pharmacies to participate in the IP pathfinder locally, to test how independent prescribing could be a part of community pharmacy services. Provisionally, this project will run up until end of March 2024 and feed into national evaluations, but there is a potential chance that the project may be extended into April and further (to be confirmed by NHSE later).

You may remember the expression of interest process earlier in the year where one pharmacy was selected earlier in the year to participate, but we now have an opportunity to identify another pharmacy to participate and the LPC is working collaboratively with the ICB to identify a suitable pharmacy to participate.

The model in Kent & Medway is based around an add-on to the hypertension case finding service, with the community pharmacies stepping into ongoing management

of hypertension in collaboration with the local GP practice. It is therefore key that you are providing the hypertension case finding service, have a strong working relationship with your GP practice and if accepted, would be willing to work together to design a local pathway to manage patients.

Please also note that due to the timeframe of this piece of work, only existing independent prescribers working in a Kent & Medway community pharmacy are able to apply; those currently training or with a plan to train in the future will not be eligible at this time.

I hope you will agree that this is an exciting and unmissable opportunity for us as an area to play a part in shaping future national services in this way, and a real opportunity for us to showcase the role that community pharmacy can play now and in the future.

EOI closes at 11.55pm on Wednesday 27<sup>th</sup> September 2023.

[To complete EOI click here.](#)

---

### **Kent, Surrey and Sussex Pre-registration Trainee Pharmacy Technician (PTPT) Programme (new)**

These are two of a series of **virtual** once-monthly training events for PTPTs in secondary care and primary care. Through this programme, the aim is to promote a culture of multi-sectoral working to support the safe transfer of medicines across primary and secondary care.

**Date:** September 2023 Tuesday 12th 13:30 to 14:45

Teams joining link is in the attachment below.

PTPT Year 1: Mental Health Hosted by Kent and Medway NHS and Social Care Partnership Trust

PTPT Year 2: Respiratory Hosted by University Hospitals Sussex NHS Foundation Trust

Click the link [here](#) for more information.

---

### **Serious Shortage Protocols for Estradot® and Jext® – extension (new)**

Because of ongoing supply issues, we are extending the Serious Shortage Protocols (SSPs) currently in place for Estradot® 100mcg patches (SSP057) and Jext® 300mcg adrenaline auto-injectors (SSP058).

The new end date for SSP057 is Friday 13 October 2023.

The new end date for SSP058 is Friday 20 October 2023.

The SSPs are available to view on the NHS Business Service Authority (BSA)'s [dedicated SSP web page](#). If you have any questions regarding the SSPs please contact the NHS Prescription Service.

---

### **T.Level placements to provide community pharmacy work-based learning to students at Mid Kent College (new)**

Mid Kent College is teaming up with NHS Kent and Medway to offer students undertaking science and health T.Levels placement experiences within pharmacy.

Pharmacy employers within Kent and Medway are being sought to provide part time (2 days per week) work-based experience for students in their first year of study. The total number of hours commitment we are looking for from an employer is 315 hours. No salary is provided to the students, the primary aim for them is to achieve experience in the working environment within a pharmacy to build knowledge, skills and confidence to equip them for a potential future career in pharmacy.

One student who completed a placement in a community pharmacy in Gillingham had a great experience which has now resulted in them becoming employed by the pharmacy part time as a dispenser and the student is now looking to develop further by applying to undertake the MPharm



degree.

For more information and to express an interest in taking a student from February 2024, please contact Maria Staines [maria.staines@nhs.net](mailto:maria.staines@nhs.net) deadline for expressions of interest 28<sup>th</sup> September 2023.

---

**Community Pharmacy Kent**

Address: 2017 6-8 Revenge Road, Lordswood, Chatham, Kent, ME5 8UD  
Tel: 01634 649101 | Email: [Admin@kentlpc.org.uk](mailto:Admin@kentlpc.org.uk)

*Copyright © 2023 Community Pharmacy Kent, All rights reserved.*

To view our newsletter archives click [here](#).

Want to change how you receive these emails?

You can [update your preferences](#) or [unsubscribe from this list](#).