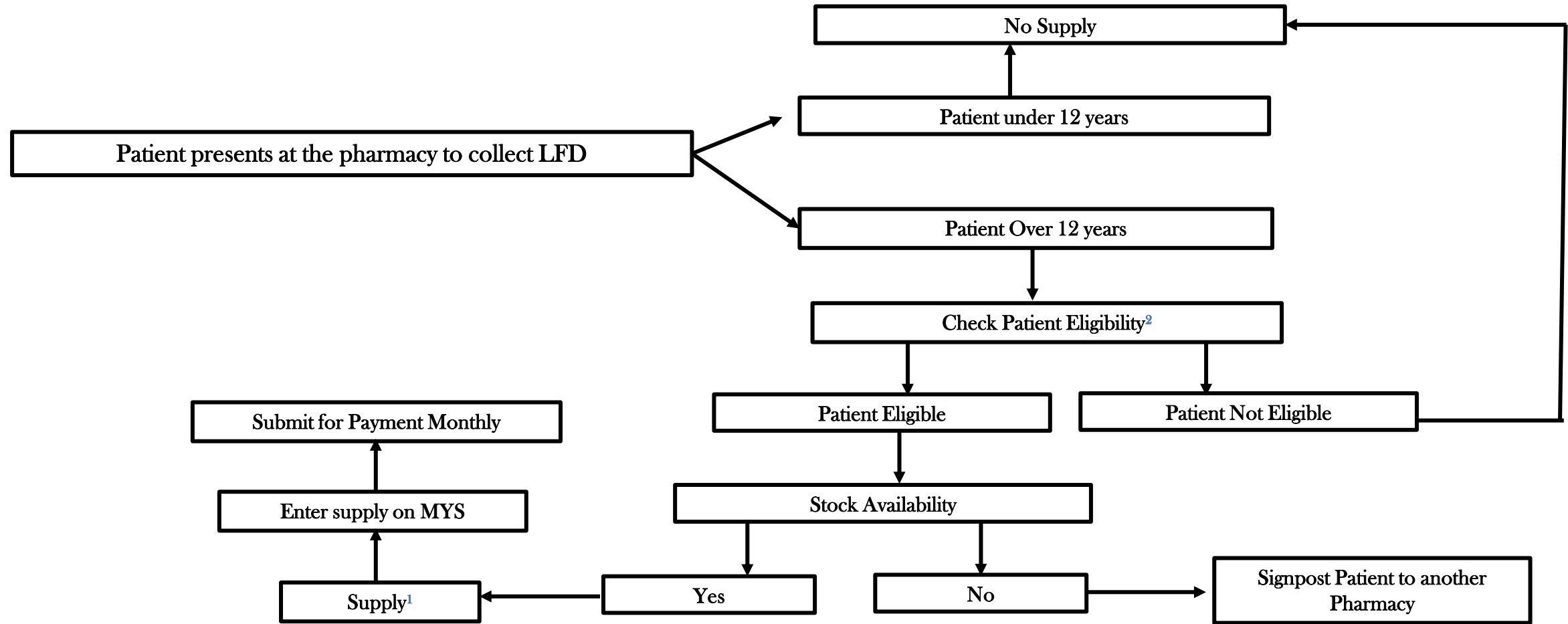


NHS LATERAL FLOW DEVICE (LFD) SUPPLY SERVICE PATIENT JOURNEY FLOW DIAGRAM



References.

- [1. LFD-Record-Form-2023.pdf \(cpe.org.uk\)](https://www.cpe.org.uk/lfd-record-form-2023.pdf)
- [2. We're all community pharmacy \(cpe.org.uk\)](https://www.cpe.org.uk/we-re-all-community-pharmacy)

Other important information can be obtained via any of these links

- [NHS lateral flow device tests supply service for patients potentially eligible for COVID-19 treatments \(england.nhs.uk\)](https://www.england.nhs.uk/nhs-lateral-flow-device-tests-supply-service-for-patients-potentially-eligible-for-covid-19-treatments/)
[LFD Service - FAQs - Community Pharmacy England \(cpe.org.uk\)](https://www.cpe.org.uk/lfd-service-faqs)