



## Newsletter

26th October 2023

Week 42

This newsletter contains useful information for community pharmacy owners and staff in Kent



To download a copy of the November Deadline tracker click [here](#).

## WORKFORCE SURVEY

### **Community Pharmacy Workforce Survey 2023 (CPWS23) (Mandatory!)**

The [Community Pharmacy Workforce Survey 2023](#) launched on the 23rd of October 2023 and will close on Sunday the 17th of December.

This annual survey is part of the community pharmacy regulations since 2022 and provides consistent, accurate data to support effective workforce planning. The survey is being conducted by North of England Commissioning Support Unit (NECS) on behalf of NHS England.

Completion of the survey **is a mandatory requirement for all pharmacy owners.**

For any questions about CPWS23, please contact [england.pharmacyteam@nhs.net](mailto:england.pharmacyteam@nhs.net).

For any questions relating to the online survey, please contact: [necsu.reteam@nhs.net](mailto:necsu.reteam@nhs.net).

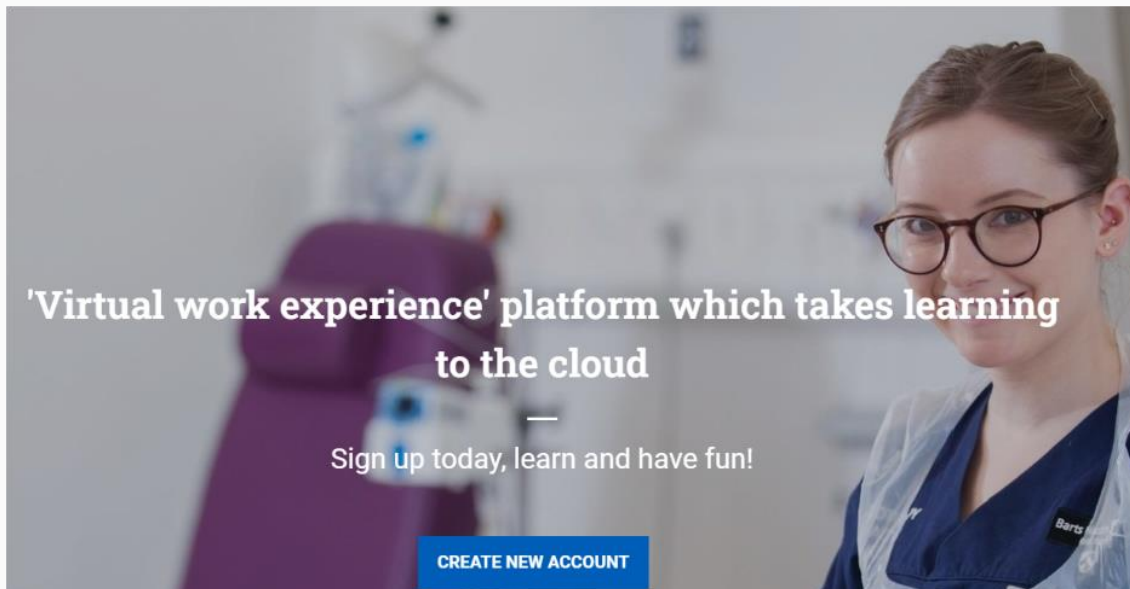
---



### **NHS 111 Starline for Community Pharmacists (Updated!)**

It has come to our attention that national changes / additions to the 111 call process have affected how the star lines are accessed. Please see [here](#) for updated information for Community Pharmacists.

---



### **NHS England Interactive and Immersive Pharmacy Careers 360 Videos launch (New!)**

The NHS England Technology Enhanced Learning team has developed 'Pharmacy: A Day in the Life' the first interactive and immersive series of pharmacy VR360 career videos for 14-to-18-year-old learners.

Click [here](#) to view an introductory video.

#### ***How to access Pharmacy: A Day in the Life***

The videos can be accessed on a headset or browser:

1. Create an account [here](#).

2. Click [here](#) to access the pharmacy course.

**Please help to promote this exciting resource to our young learners.**

---



**Survey: Community Pharmacy Assurance Framework (CPAF) (NEW!)**

The full CPAF survey monitoring pharmacy contractors' compliance in 2022/23 will be available to complete from 6 November until midnight on 3 December 2023.

Contractors will be contacted directly by the NHS Business Services Authority if their pharmacy has been selected. Completion is a mandatory requirement for all selected contractors and the results will form the basis for which pharmacies will be considered for a visit. Users of the NHSBSA's [Manage Your Service \(MYS\) portal](#) will be able to complete the survey via their MYS login.

---



**Lateral flow device tests supply advanced service (New!)**

The lateral flow device (LFD) tests supply service for patients potentially eligible for COVID-19 treatments will launch on 6 November 2023. Eligible patients can obtain a free box of five LFD tests from community pharmacy.

A positive LFD result will be used by the prescriber to inform clinical assessment to determine whether the patient will benefit from COVID-19 treatments. [The full list of eligibility criteria can be found in the NICE recommendations for COVID-19 community treatments.](#) Further details, including [pharmacy registration and the service specification, can be found on the NHS England website.](#)

Kent LPC have devised a flow chart [here](#) to support you in your practice.

---



### **Sharing views on the Greener Pharmacy Guides (New!)**

[The Royal Pharmaceutical Society invites individuals to share their perspectives on the draft Greener Pharmacy Guides.](#) These guides are aimed at supporting pharmacy teams in community and hospital pharmacies to enhance the environmental sustainability of their professional practices by reducing carbon emissions.

Interested parties are encouraged to participate in the consultation and provide feedback on the draft guides by 8 November 2023.

---



## Community Pharmacy Blood Pressure Check Service and Pharmacy Contraception Service

*Pharmacy blood pressure check service finder tool for the public and patients*

A new service finder on the NHS website (NHS.UK) allows healthcare professionals and patients to search for and [find a pharmacy that offers free blood pressure checks](#).

The tool explains who is eligible to go to a pharmacy to get their blood pressure checked and can be searched using a postcode, with the nearest pharmacy listed first.

Blood pressure conditions pages on the NHS website have also been updated to signpost to the blood pressure pharmacy finder.

**All pharmacy contractors offering the service should ensure that their pharmacy profile on [NHS Profile Manager](#) is up to date and indicates that they provide the service.** This will ensure that all pharmacies which offer the service located nearest the postcode provided will be listed.

*NHS Service finder for healthcare professionals*

The NHS Service Finder for healthcare professionals (provided by the UEC Directory of Services team) will shortly be expanded to include the ability to search for pharmacies providing NHS Community Pharmacy Blood Pressure Check and NHS Pharmacy Contraception Services.



### Reminding patients about prescription saving schemes (Reminder!)

A new NHS England campaign aims to raise awareness of prescription saving

schemes.

A Prescription Prepayment Certificate will save people money if they pay for more than three items in three months, or 11 items in 12 months. People on a low income could be entitled to help with costs or free prescriptions through the low income scheme, depending on their circumstances. Healthcare staff are urged to remind their patients about these schemes – particularly those living with long-term conditions and people living in deprived areas where data shows people receive significantly more prescription items than those living in less deprived areas.

[People can check if they're eligible for free prescriptions](#) or [find out more about the Prescription Prepayment Certificates](#).

---

# PHARMACY DENTAL FACT SHEET

## **Kent County Council Oral Health Campaign (New!)**

Managing dental and oral presentations in community pharmacy. These factsheets have been developed jointly by pharmacists and dentists to support community pharmacy teams to manage urgent dental and oral symptoms and to signpost patients to other services where indicated.

These factsheets cover a range of dental and oral conditions where pharmacies can meet urgent care needs through providing advice on oral health and signposting to dental and other urgent and emergency care services.

Click the [here](#) for the factsheet.

---



*Centre for Pharmacy Postgraduate Education (CPPE)*

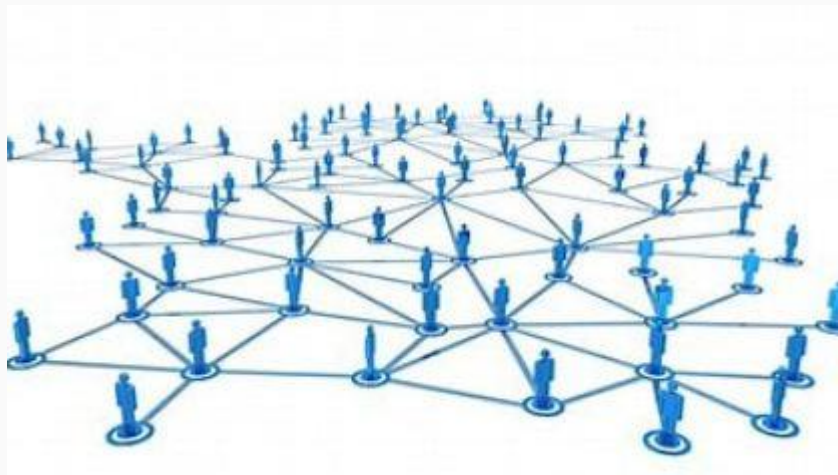
**Equip yourself to deliver high-quality services (Reminder!)**

CPPE offers range of resources and support the delivery of Community Pharmacy services.

Click the link [Providing NHS and public health pharmacy services: CPPE](#) for more information.

Click the link for CPPE Workshops from October to December 2023 [Welcome to CPPE learning communities \(communitypharmacy.org.uk\)](#).

---



**Kent & Medway Pharmacy Technician Network**

Kent and Medway Pharmacy Technician Network which is being established so that we can make sure community pharmacy technicians are aware of the opportunity to join for CPD and networking.

This network is being established as a platform to build engagement with pharmacy

technicians in Kent & Medway and provide a platform for collaboration and networking within the profession locally. Click [here](#) for more information. Join the conversation on Teams between 12.30-1.30 on Monday 30th October. To be added to the circulation list for invites please contact: [naomifinch@nhs.net](mailto:naomifinch@nhs.net).

---



### **Medicines Optimisation Newsletter Oct 2023.**

Click [here](#) to read the Medicines Optimisation Team, NICE News Bimonthly – October 2023.

Click [here](#) to read the Patient information leaflet for attention deficit hyperactivity disorder (ADHD) supply disruption.

Click [here](#) to read the Attention Deficit Hyperactive Disorder (ADHD) medication availability and supply disruption update: [16th October 2023](#).

Click [here](#) to read the Briefing Note: The role of inclisiran in lipid management.

Click [here](#) to read the Shortage of Bumetanide 1mg and 5mg tablets.

---

#### **Community Pharmacy Kent**

Address: 2017 6-8 Revenge Road, Lordswood, Chatham, Kent, ME5 8UD

Tel: 01634 649101 | Email: [Admin@kentlpc.org.uk](mailto:Admin@kentlpc.org.uk)

*Copyright © 2023 Community Pharmacy Kent, All rights reserved.*

To view our newsletter archives click [here](#).

Want to change how you receive these emails?

You can [update your preferences](#) or [unsubscribe from this list](#).