



Newsletter

1st December 2023

Week 48

This newsletter contains useful information for community pharmacy owners and staff in Kent



[To download your copy of the Kent & Medway Deadline Tracker click here.](#)



ENT Pharmacy First Workshop- 28/01/2024 (NEW!)

We are delighted to announce that Community Pharmacy Kent, in collaboration with CPPE has successfully secured an Ear, Nose and Throat (ENT) clinical assessment skills workshops for Kent Community Pharmacy contractors. The service specification for pharmacy first service has just been launched and is attached. This will go live on 31st January 2024.

Workshop details are as below...

- Date: 28th January 2023
- Venue: Mercure Great Danes Hotel, Ashford Road Maidstone ME17 1RE
- Time: Two sessions will be conducted, with 60 participants in each session.
- Morning Session: 9.30am-12.30pm
- Afternoon Session: 1.30pm -4.30pm.

Further details regarding the workshops, including the booking link, will be announced shortly via CPPE.

Place bookings will be on first come first served bases so don't miss out.

Stay tuned for further updates.

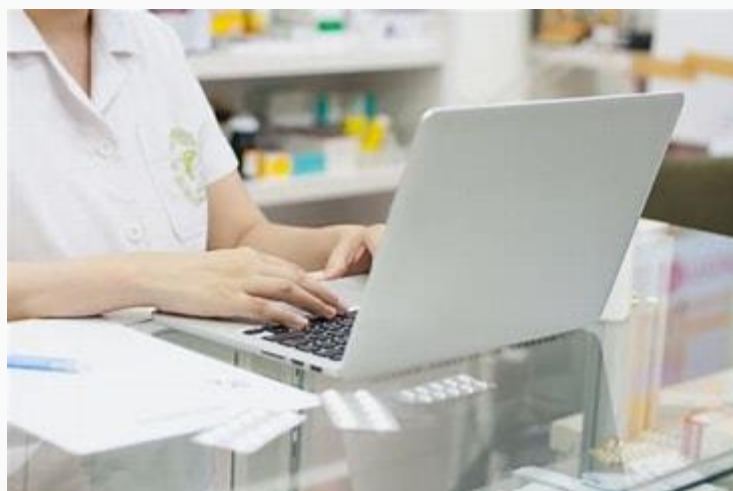


Practice Managers Conference

Community Pharmacy Kent (CPK) attended the Practice Managers conference on Wednesday the 29th of November, at Ashford International Hotel. The conference was a fantastic opportunity to engage with practice managers across Kent and talk about the amazing work contractors are doing with GPCPCS, and all the exciting changes coming within the new year.

There was lots of enthusiasm regarding the new Pharmacy First service, and very positive feedback from practice staff.

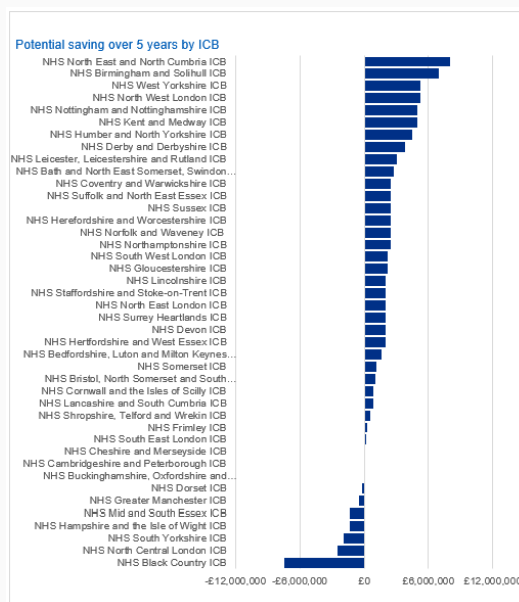
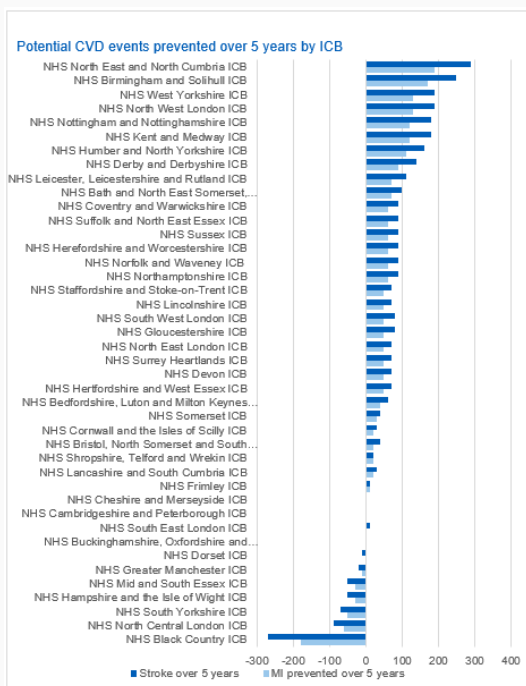
Well done Priya Mattu for representing Community Pharmacy at the event.



Discharge Medicine Service (DMS) update.

Trusts across our patch are improving their engagement with DMS and are eager to utilise community pharmacy for continuity of care.

Two trusts have committed to sending weekly data of their DMS referrals to CPK, so please check your NHSmail inbox regularly for emails from our team following these up.



Hypertension good news

Some great news on the impact of our collaborative work over the last year on hypertension, especially as it is comparing with pre covid times. Not only will we prevent 180 strokes and 120 heart attacks, but the graphs above also highlight potential savings of £5m over the next 5 years as a result of this.

K&M ICB is 6th in the country for savings and also one of the highest increases in our hypertension list adding a further 12,000 patients so the greater treatment to target percentage is even more impressive with the increase to the denominator.

Your work in driving blood pressure checks and conversion to Ambulatory Blood pressure monitoring (ABPM) is making a difference in peoples of people living in our communities.



Pharmacy First PGDs and protocol published.

NHS England has published drafts of the 23 PGDs and one protocol for the Pharmacy First service this morning on the NHSBSA's website.

This follows the announcement, earlier this week, of the [**publication of the service specification and the seven clinical pathways**](#) for the service.

[**Download the draft PGDs and draft protocol**](#)

The 23 PGDs and one protocol will be used by pharmacists to authorise supply of medicines at NHS expense, where clinically appropriate, following a consultation for one of the seven conditions for the Pharmacy First service.

The [**Centre for Pharmacy Postgraduate Education \(CPPE\)'s Pharmacy First webpage**](#) has also gone live, which includes a link to their self-assessment framework, which was developed in partnership with NHS England. This framework will support users to reflect on their knowledge, skills and behaviours to provide the Pharmacy First service, as well as to help identify any gaps and make an action plan to develop themselves, as needed, ahead of providing the service.



Community Pharmacy England Webinars

Community Pharmacy England will be hosting a series of webinars to help pharmacy owners and their teams prepare for the new Pharmacy First service, and changes to the Contraception and Hypertension Case-Finding Services.

The webinars will be recorded and following the events, the recording will be made available via the CPE website for people to watch on-demand.

Pharmacy Contraception Service: Initiating contraception (Tuesday 5th December 2023, 7-8.30pm)

Pharmacy First: Getting to know the service (Wednesday 13th December 2023, 7-8.30pm)

Hypertension Case-Finding Service (Wednesday 3rd January 2024, 7-8.30pm)

Pharmacy Contraception Service: getting going with the service (Wednesday 10th January 2024, 7-8.30pm)

Pharmacy First: Getting ready for launch (Monday 15th January 2024 7-8.30pm)



CPPE Accuracy checking pharmacy technician programme - more free places available

NHS England has provided additional funding for CPPE to offer the Accuracy checking pharmacy technician (ACPT) programme to an additional 40 pharmacy technicians. The ACPT programme is a 3-12-month training and development programme available to pharmacy technicians, with employer support.

Originally NHS England provided funding for 60 pharmacy technicians but this has now increased to 100 pharmacy technicians; up to 10 additional funded places are available per month between 1st December 2023 and 1st March 2024.

There has been a high-level of interest in the course therefore, pharmacy technicians who are interested in applying are encouraged to apply as soon as bookings open. There are four opportunities left to secure a place on the course; bookings open on the following dates:

- 1st December 2023 at 10am;
- 1st January 2024 at 10am;
- 1st February 2024 at 10am; and
- 1st March 2024 at 10am.

[Click here to apply for the CPPE Accuracy Checking Pharmacy Technician Programme](#)



Community Pharmacy Workforce Survey 2023 (CPWS23) (Mandatory and Reminder!)

The [Community Pharmacy Workforce Survey 2023](#) launched on 23 October 2023 and will close on Sunday 17 December.

This annual survey is part of the community pharmacy regulations since 2022 and provides consistent, accurate data to support effective workforce planning. The survey is being conducted by North of England Commissioning Support Unit (NECS) on behalf of NHS England.

Completion of the survey **is a mandatory requirement for all pharmacy owners.**

Click here to access the survey [Community Pharmacy Workforce Survey 2023 \(onlinesurveys.ac.uk\)](#).

For any questions about CPWS23, please contact england.pharmacyteam@nhs.net.

For any questions relating to the online survey, please contact: necsu.reteam@nhs.net

The LPC will send a reminder email to all contractors that have yet completed the survey.



Oral contraception and hypertension case finding service (Reminder!)

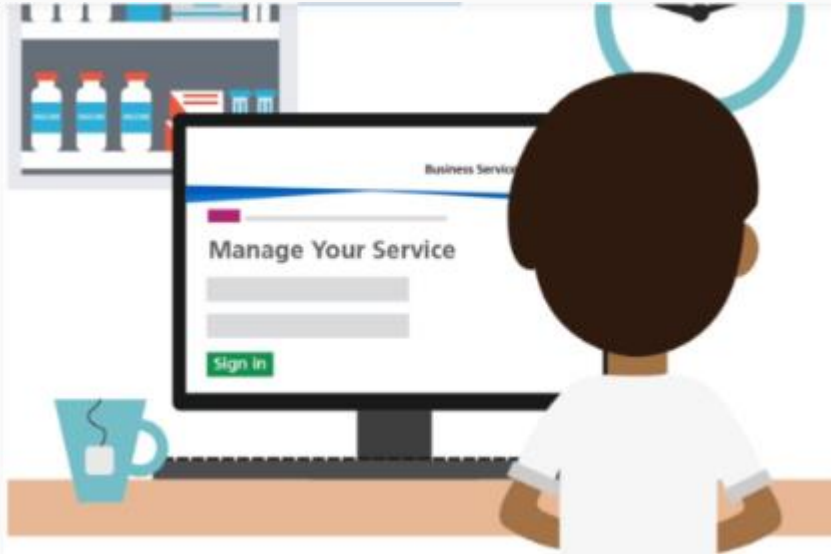
NHS England has published the updated service specification and PGDs for the Pharmacy Contraception Service and the updated specification for the Hypertension Case-Finding Service.

The expanded service will enable pharmacists to initiate oral contraception, as well as continuing to provide ongoing management of oral contraception that was initiated in general practice or a sexual health clinic.

[Pharmacy Contraception Service: Updated service spec and PGDs](#)

[Hypertension Case-Finding Service: Updated service spec](#)

The changes to the services come into force **TODAY** 1st December 2023.



Community Pharmacy Assurance Framework (CPAF) – full survey deadline extended (Reminder!)

NHS England has extended the final completion deadline for the full CPAF survey. The survey will now close at midnight on 17th December.

Contractors required to complete the full CPAF survey will be contacted directly by the NHS Business Services Authority if their pharmacy has been selected and users of the NHSBSA's [Manage Your Service \(MYS\) portal](#) will be able to complete the survey via their MYS login until the closing date.

If you have a query about accessing or using this questionnaire, please email pharmacysupport@nhsbsa.nhs.uk, including your pharmacy ODS/F code and pharmacy contact details.



LFD advanced service (Reminder!)

Free lateral flow device tests available from community pharmacy to [eligible](#)

[patients](#).

Pharmacy owners must have signed up to the service via NHSBSA's [MYS portal](#). Participating pharmacies are encouraged to ensure their [NHS Profile Manager](#) profile is up to date, so patients and other health care professionals can check NHS.uk to access the service. Click [here](#) for more information.



Please note that virtual outcomes training platform is free for all Community Pharmacy contractors.

[Updated for the new service spec: Hypertension Case Finding Training](#)

[Lateral Flow Device service Training](#)

[Eczema](#)

[NHS Flu Vaccination Service 23/24](#)

[PQS](#)

[SGLT2 Inhibitors - To Support NMS](#)

See [here](#) for a full list of courses



To read the latest edition of the **Kent & Medway Safeguarding Adults Board Newsletter** click [here](#).

To read the latest edition of the **NHSE Primary Care Bulletin** Click [here](#).

Community Pharmacy Kent

Address: The Hill Hub, 1A Highfield Road, Dartford, DA1 2JH

Tel: 01634 649101 | Email: Admin@kentlpc.org.uk

Copyright © 2023 Community Pharmacy Kent, All rights reserved.

To view our newsletter archives click [here](#).

Want to change how you receive these emails?

You can [update your preferences](#) or [unsubscribe from this list](#).